

SWIM and Horizon 2020 Support Mechanism

Working for a Sustainable Mediterranean, Caring for our Future

SWIM-H2020 SM

Introductory Intervention

Governance in Sustainable Development and the DPSIR Policy Cycle

Presented by:

Prof. Michael SCOULLOS, Team Leader

2-3 October 2018 Brussels, Belgium

This Project is funded by the European Union



umweltbundesamt[®]

ATKINS

Governance

The process of decision – making and the process, structures and mechanisms by which decisions (policies, rules, strategies) are implemented.

See different related notions:

- participatory governance
- good governance
- global governance

Sustainable Development is based on two needs:

I. The need to address environmental deterioration and conserve the vital functions and services of the environment for future generations.

II. The need to address the desperate conditions of the world's poor and enhance the equity of peoples around the world.

To address these needs, **global governance** should be in place.

Sustainable Development

Is a type of Development that tries to address the accumulated problems resulted from the anthropogenic impact on our planet and attempts to ensure the continuation of human presence on Earth in a way that satisfies its needs and aspirations.

To obtain it, **good governance** is needed at all levels from local to global.

Sustainable Development:

Is the development that meets the needs of the present without compromising the ability of future generations to meet their own needs.

But the WCED immediately explains that SD contains within it two more concepts:

- the **concept of 'needs'**, in particular the essential needs of the world's poor, to which overriding priority should be given; and
- the **idea of limitations** imposed by the state of technology and social organisation on the environment's ability to meet present and future needs.

In order for the concepts to become implementable policies **governance** is required

In essence, **Sustainable Development**

Is a **process** of change in which the exploitation of resources, the direction of investments, the orientation of technological development and institutional change are all in balance and enhance both current and future potential to meet human needs and aspiration.

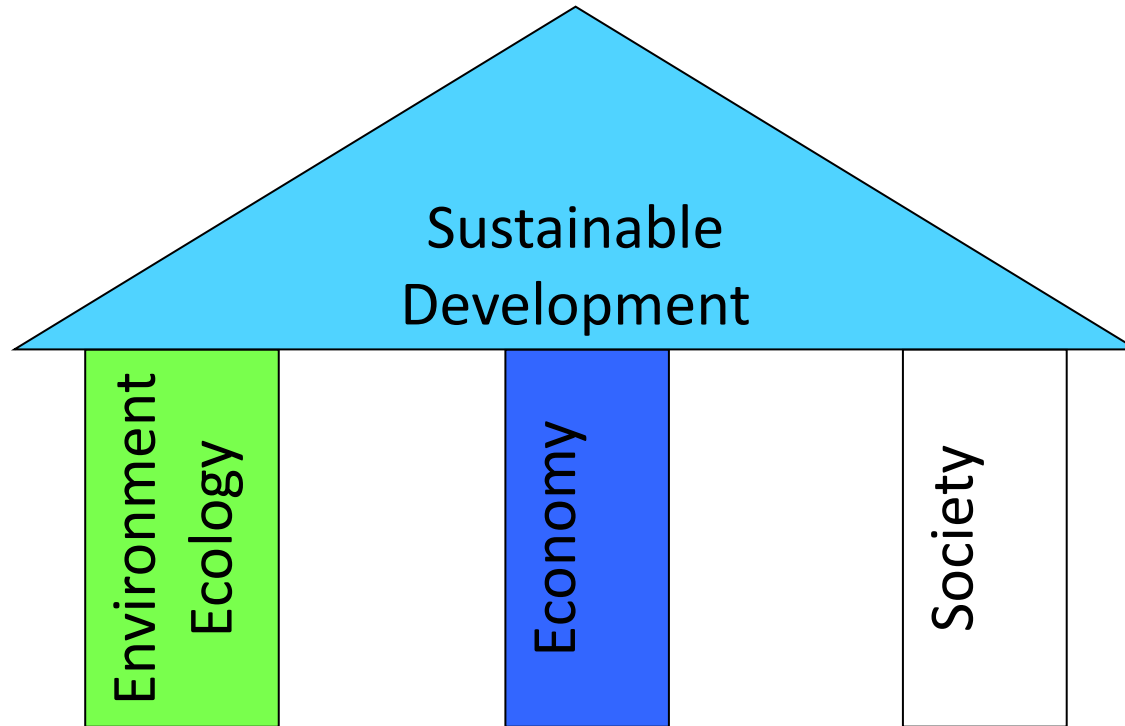
To follow the chances, provide guidance and achieve the above, **governance** is essential

SDGs

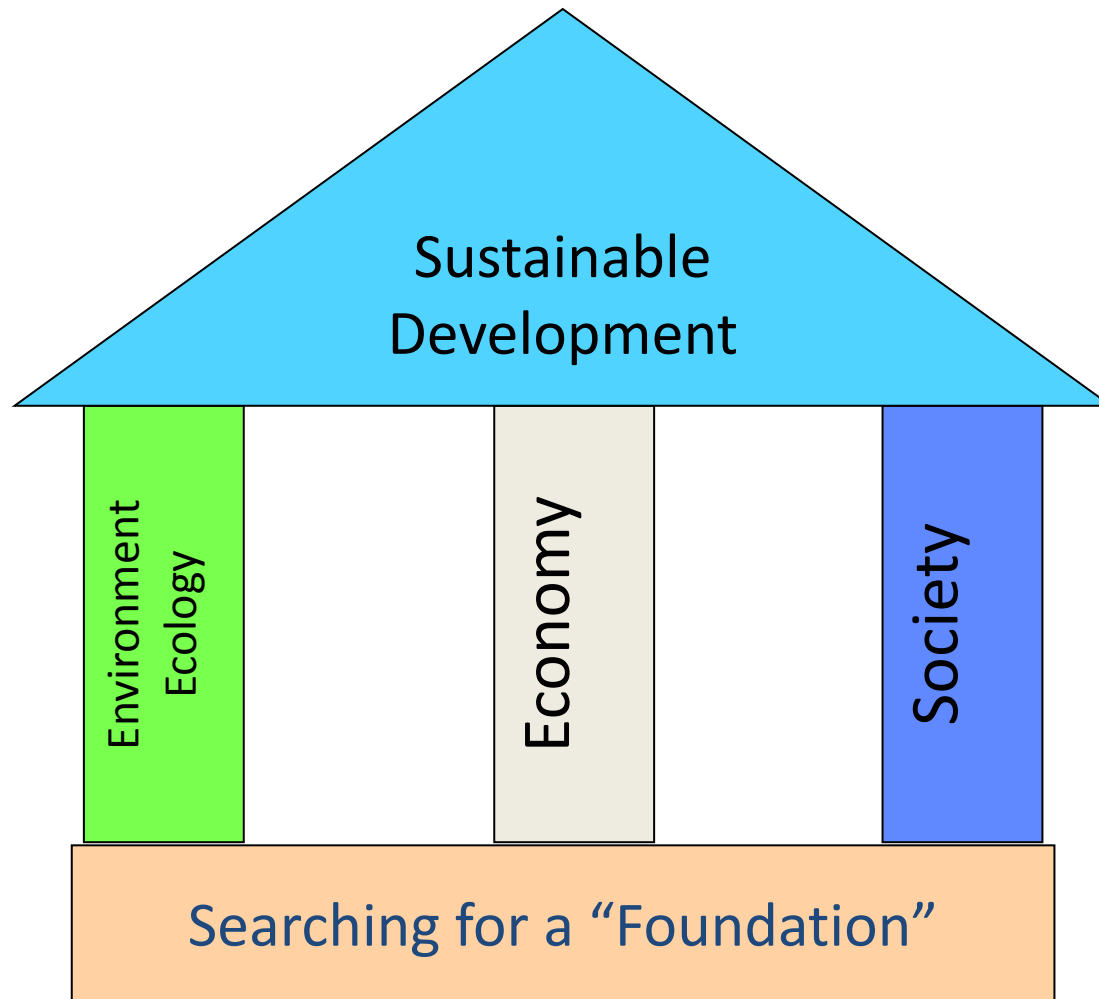
In 2015 all UN member states unanimously decided to achieve 17 Sustainable Development Goals by 2030.



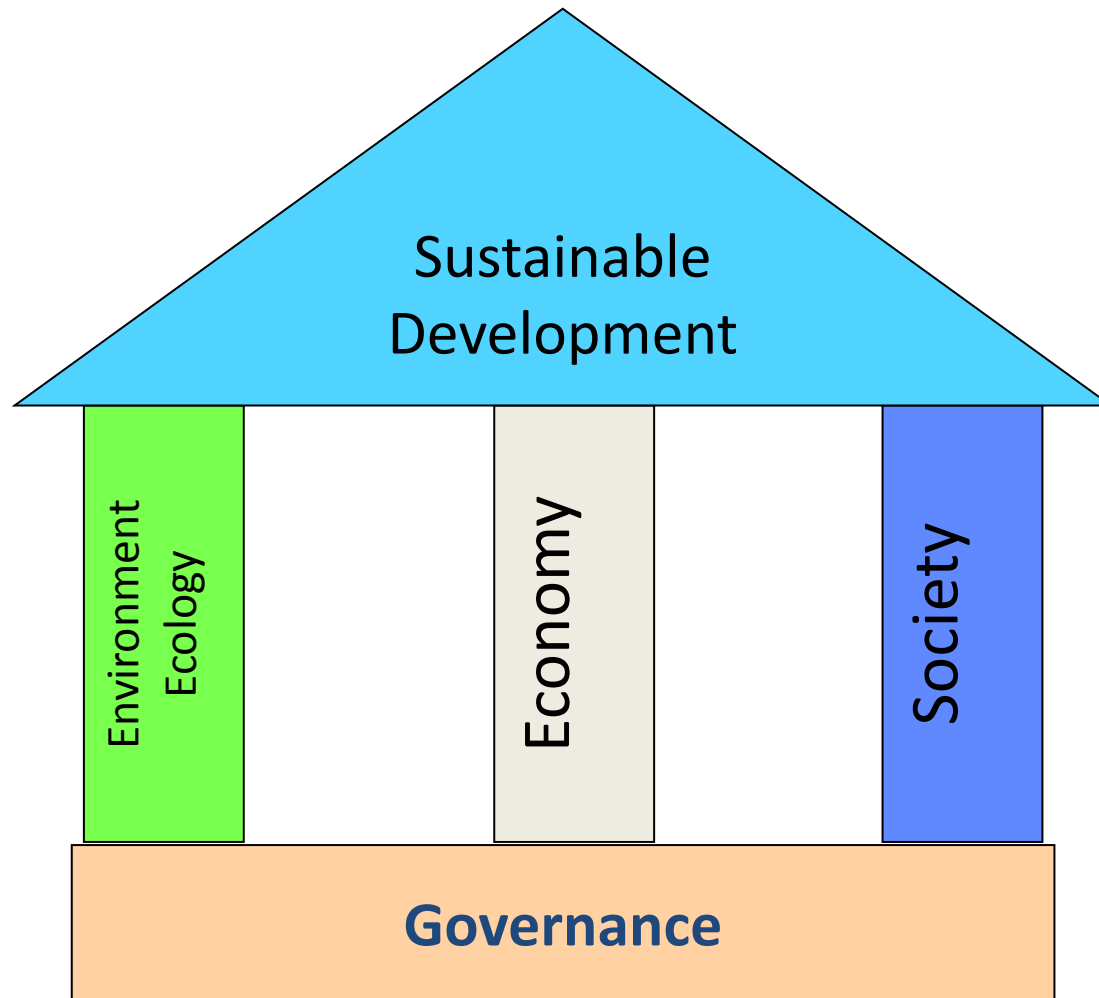
The Rio UN Conference on Environment and Development 1992, Agenda 21

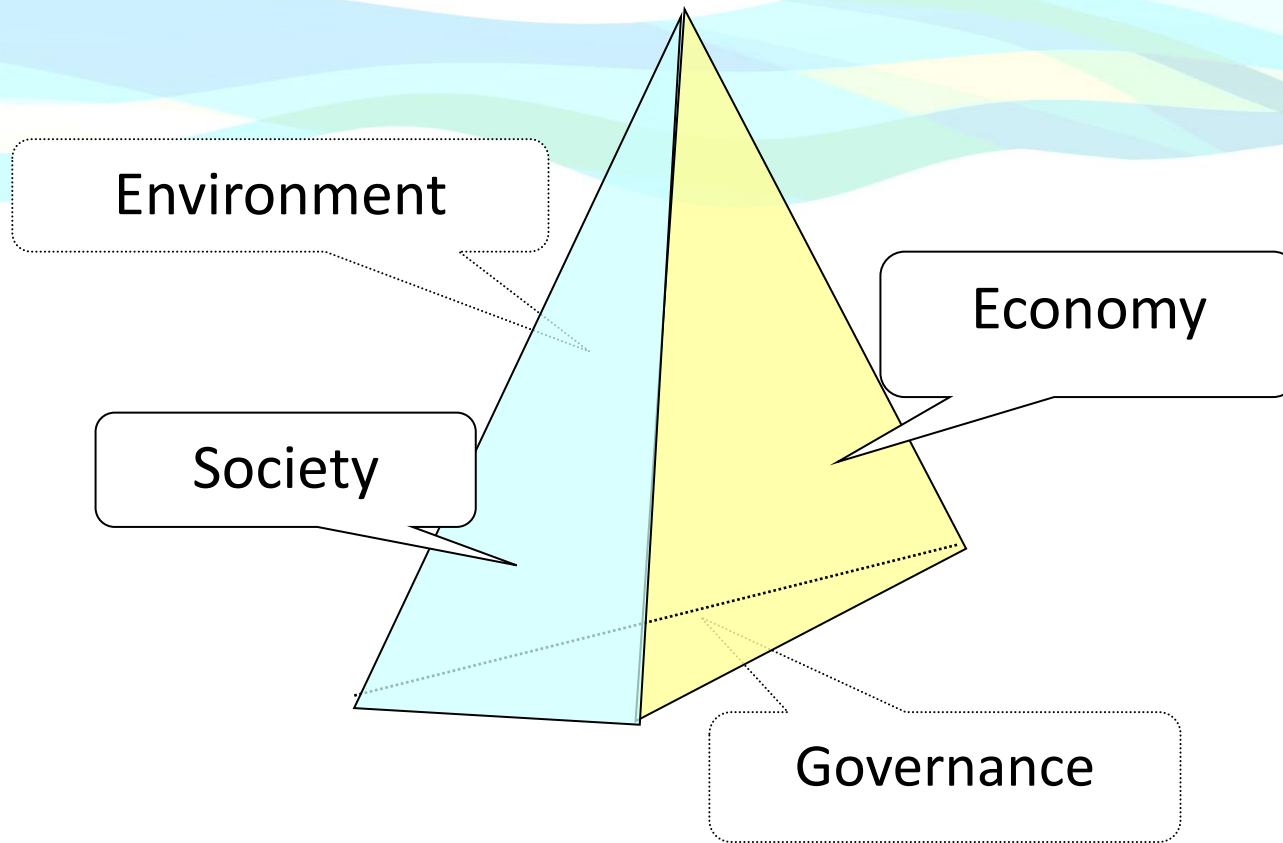


In and after the Thessaloniki International Conference in 1997

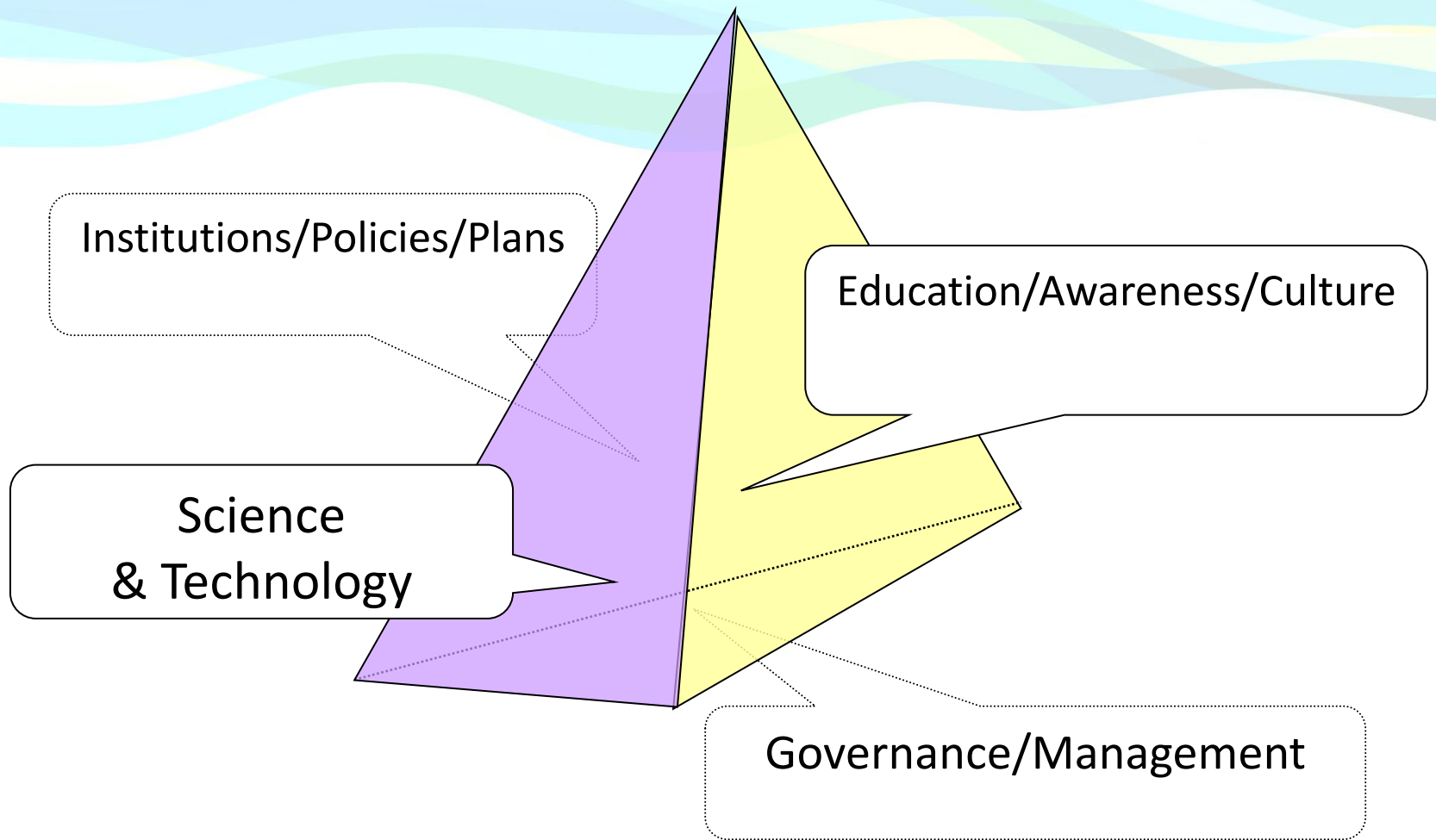


In and after the Thessaloniki International Conference in 1997



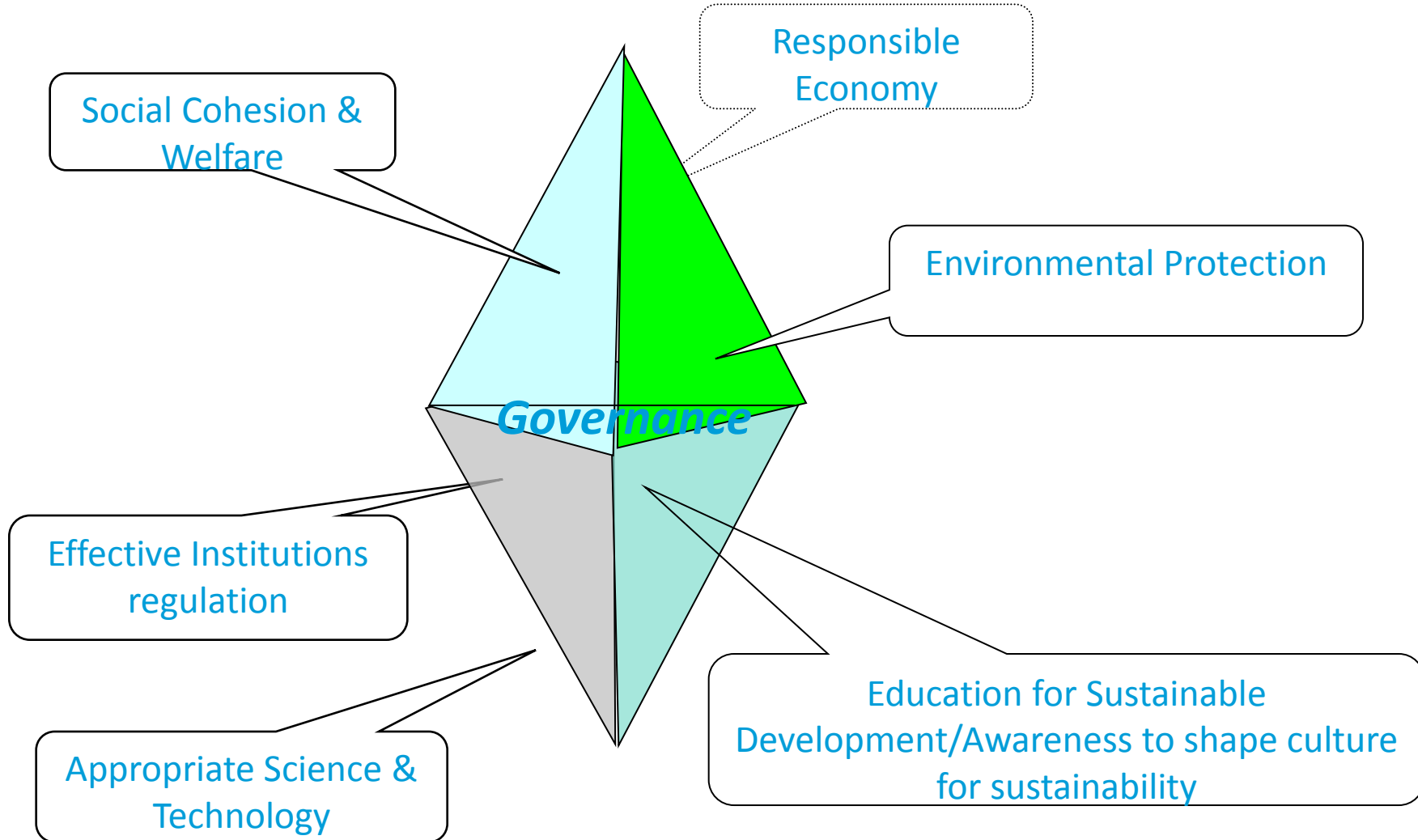


A non-pillar representation of SD and the role of Governance



Analysis of Governance tools for the Implementation of SD

To obtain Sustainable Development we need, good governance:



Co-existence of basic “qualities” lead to good governance



Source: [Australian National Audit Office](#)

The DPSIR framework Policy Cycle to facilitate Governance

Driving Forces-Pressures – State of the Environment- Impacts -Responses

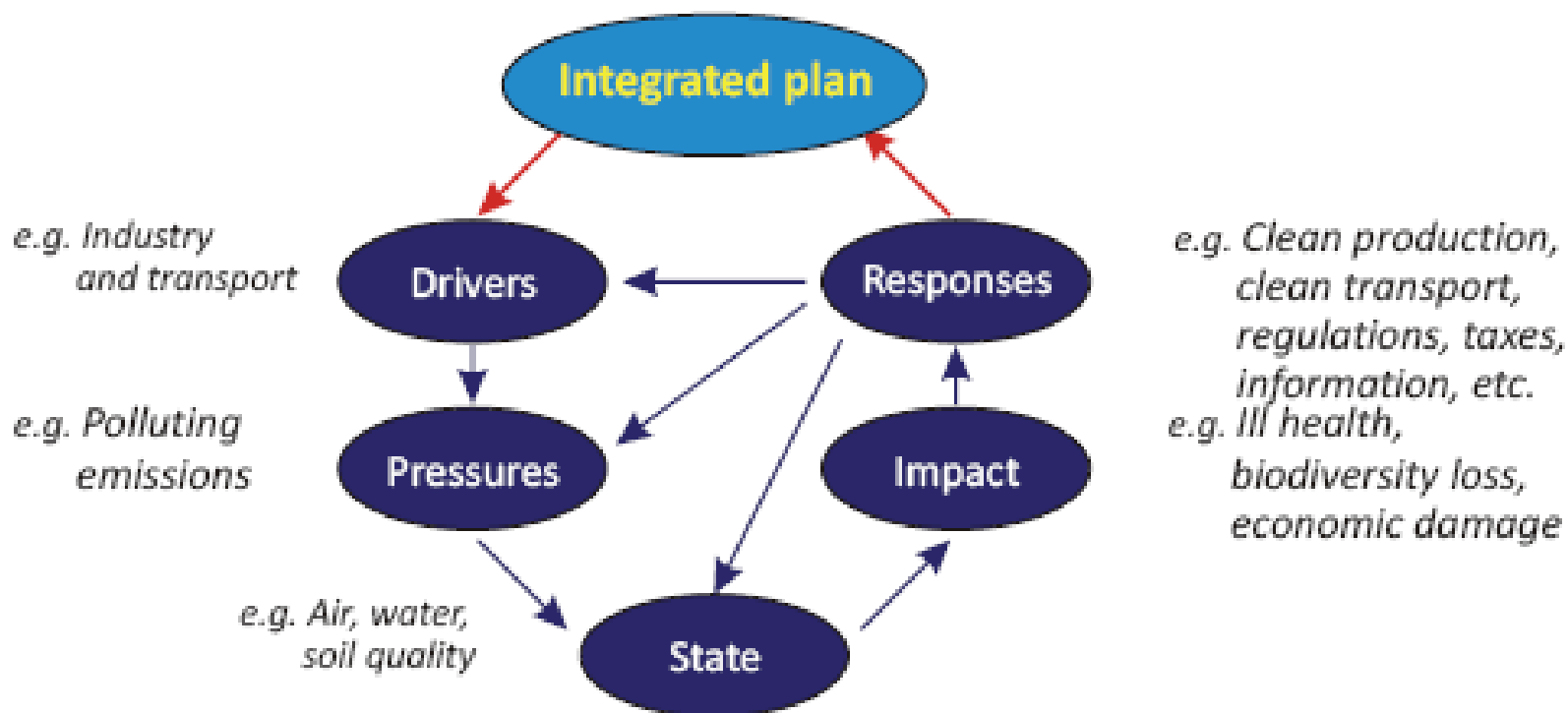


Figure 5.1. DPSIR Framework informs the preparation of the Integrated Plan

Feedback in Governance

The non-pillar concept of SD in conjunction with the DPSIR Cycle portrays **Governance** and **Integrated Management** as the Key way leading to SD.

Fundamental element of such management is its **continuity** and dynamism in receiving **feedback**, improving constantly. Such management is an “**adaptive**” one.

Adaptive Management (1/4)

“Adaptive Management” is not another type of management but rather a quality that all integrated management plans should have. Key principles of the Adaptive Management are the following:

- **Flexibility and adaptability of the measures** to implement e.g. ICZM, and IWRM and any other compatible planning.
- Regular **update of sustainability targets** to take into account the changes observed (opportunities and bottlenecks) in the system.
- **Provisions for integration** of the outcomes of future scientific research.

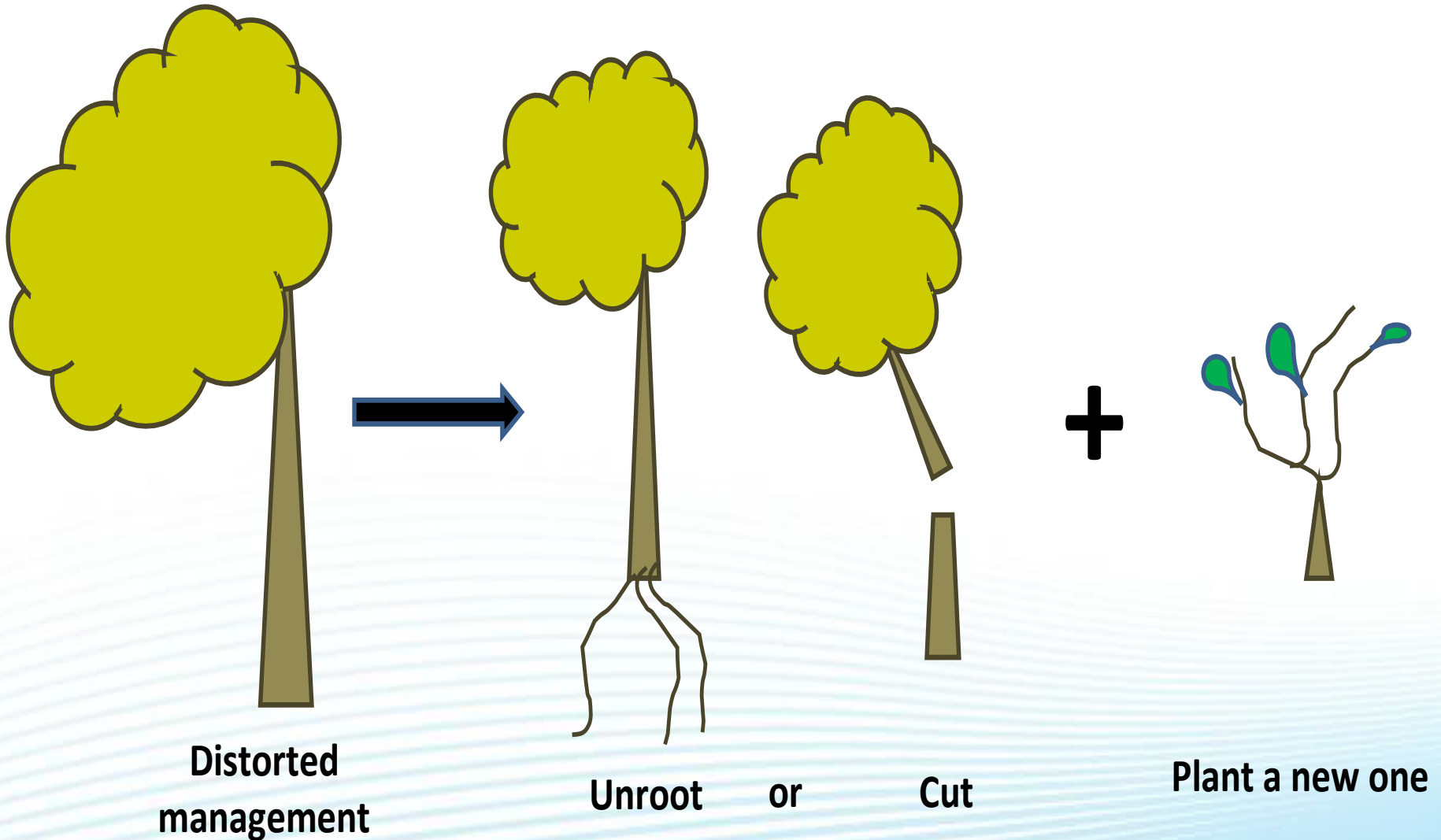
The main instruments/methods employed for its implementation are:

-**Monitoring programmes**: measuring progress towards targets (GES or “fit for purpose/use”), using sets of targets.

-Update and ameliorate strategies through **feedback** according to the outcomes of the **monitoring** process.

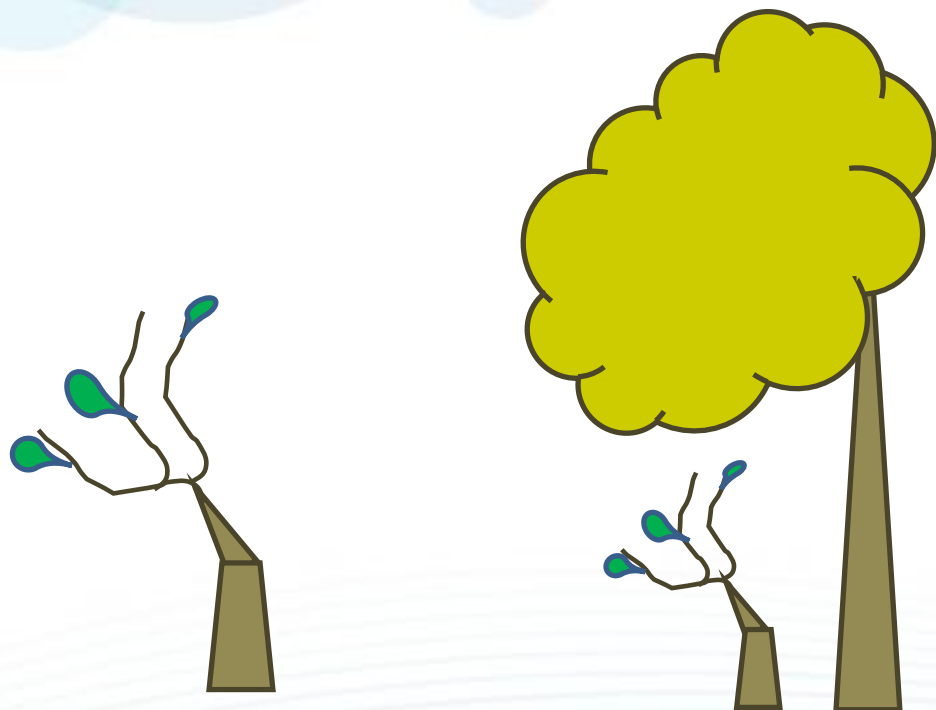
Adaptive Management (2/4)

The Common Approach



Adaptive Management (3/4)

The Usual Result...

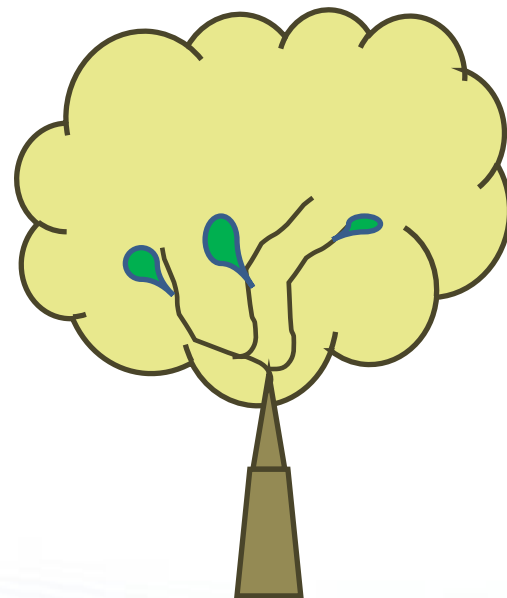


The new management distorted due to inherent conditions

or

Distorted due to resilience of the old system

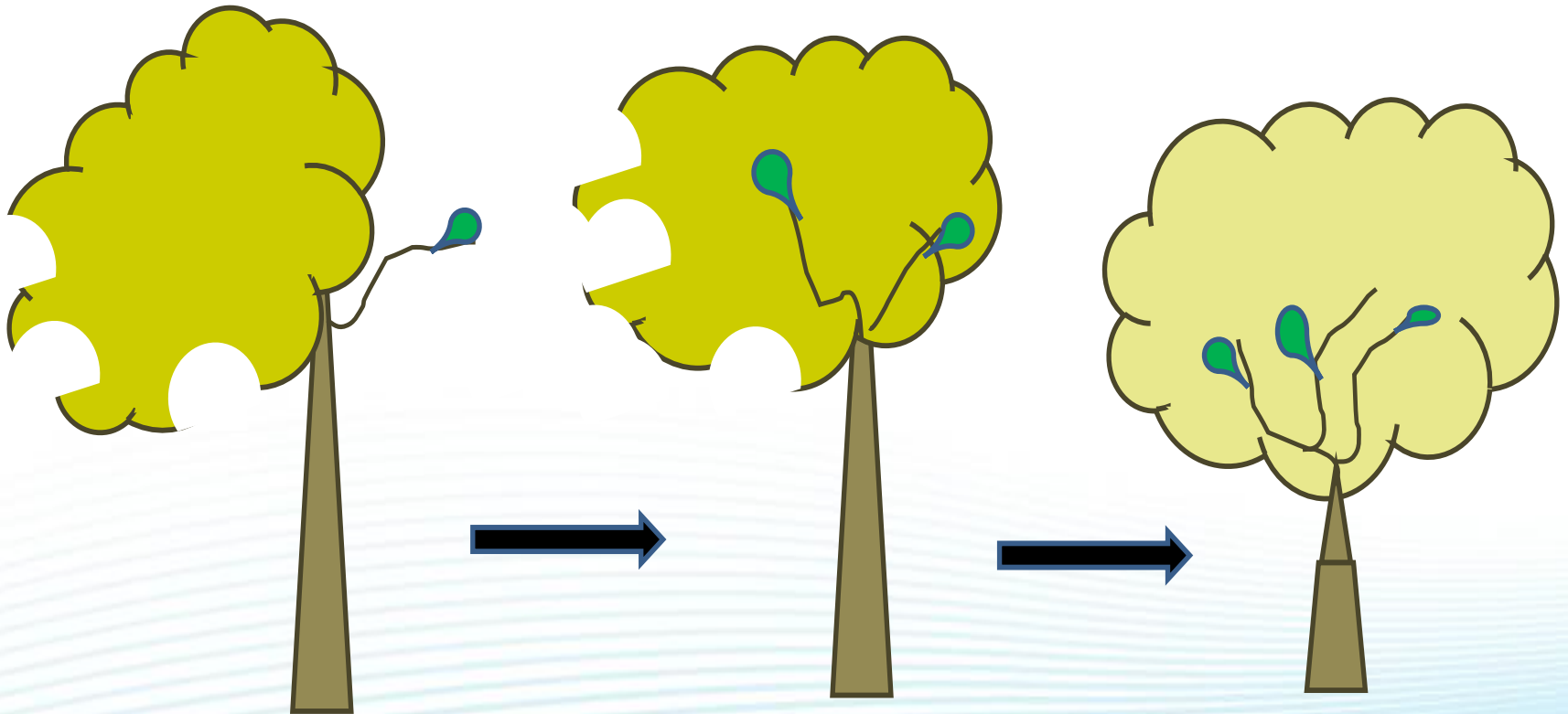
Very rarely...



Adaptive Management (4/4)

A Fundamental component of good governance.

Adaptive management





Thank you for your attention!

scoulios@swim-h2020.eu